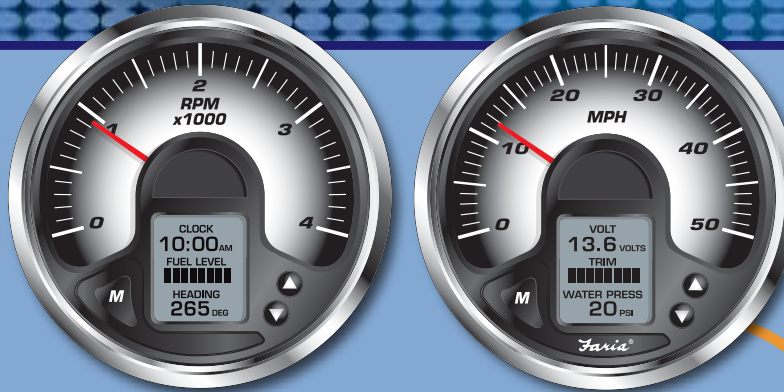


MG2000™

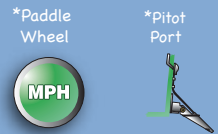
from Faria Marine Instruments



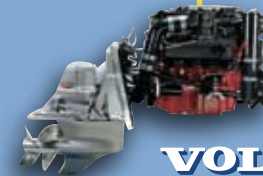
- Available for Volvo (D3, D4 and D6)
- Pressure Ports for Pitot Speed
 - Paddle Wheel Speed
 - NEMA0183 GPS Interface

Volvo Data Link
Communication Protocol

4" or 5" gauges available



Connect to Faria Bus for more display options. (See Below)

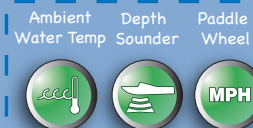


VOLVO PENTA

Analog Inputs



Available if using with a Volvo Smart Transducer



Information from engine ECU



MG2000 Tachometer

- RPM
- Oil Pressure (engine dependent)
- Oil Temperature
- Coolant or Cylinder Head Temp.
- Coolant Pressure
- Engine Hours Run Only
- System Voltage
- Trim
- Depth Sounder (with Smart Transducer)
- System generated engine diagnostic messages.
- Fuel Management¹ system
 - Fuel Pressure
 - Fuel Consumption Rate
 - Fuel Remaining
 - Estimated range to empty
 - Fuel used since last reset.
 - Average GPH

MG2000 Speedometer:

- Paddle Wheel Speed²
- Pitot Tube Speed²
- Current fuel level (Digital)
- Barometer (from engine ECU via Faria Bus)
- Trip Log
- Air and Water Temperatures
- GPS information (External GPS required via NMEA 0183 bus.)
 - Speed over ground
 - Clock
 - Latitude
 - Longitude,
 - Heading

1) D3 Engines only
2) Available if not using Volvo Smart Transducer.

Also available:



All Faria Marine Instruments comes with a Limited Lifetime Warranty see www.faria-instruments.com for details.

