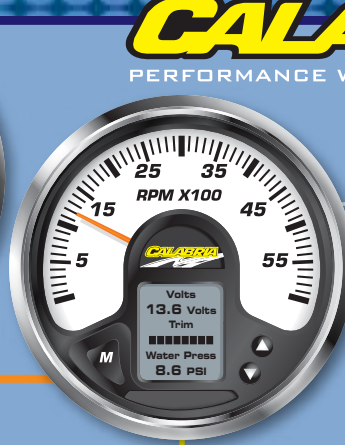
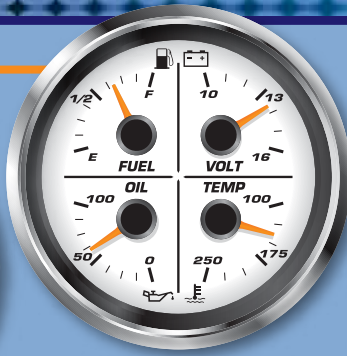
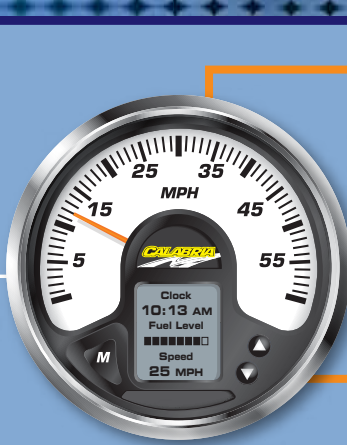
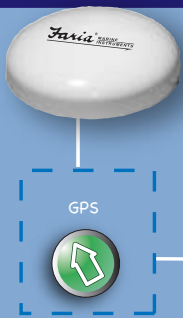


MG2000™

from Faria Marine Instruments



CALABRIA
PERFORMANCE WAKEBOARD BOATS

Analog Inputs

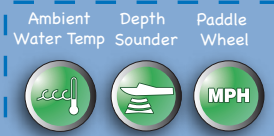
Air Temp



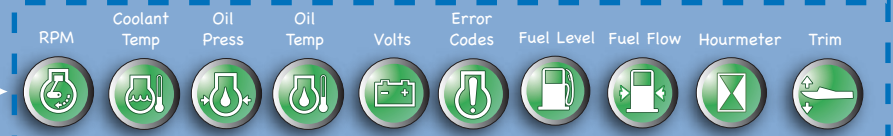
MERCURY
Engines



Smart Transducer



Information from engine ECU



MG2000 Tachometer

- RPM
- Digital Trim Level
- Engine water pressure
- Engine temperature
- Engine hours
- Battery voltage
- Digital RPM

- Fuel Management system
 - Instantaneous fuel flow
 - Fuel consumed
 - Fuel remaining
 - Estimated range to empty
- System generated engine diagnostic messages.

MG2000 Speedometer:

- Boat Speed
- Time of day
- Current fuel level (Digital)
- Paddle wheel or pitot tube speed dial driver
- Barometer
- Oil tank levels

- Air and sea temperatures
- GPS information, speed over ground, Latitude, Longitude, Heading. (External GPS required via NMEA 0183 bus.)
- TrollControl
- Current course and speed over ground

Alarms and Fault Warnings:

- Over speed, over heat, reserve oil, battery voltage, low psi, low fuel
- Oil system fault, injector fault, ignition fault, horn failure.

Alarms:

- Low oil, low fuel, boat sensor failure, water in fuel.

All Faria Marine Instruments comes with a Limited Lifetime Warranty see www.faria-instruments.com for details.



P.O. Box 983 • Uncasville, CT 06382 Tel: 860-848-9271 Fax: 860-848-2704

fm-001-0022 rev a 5/2008