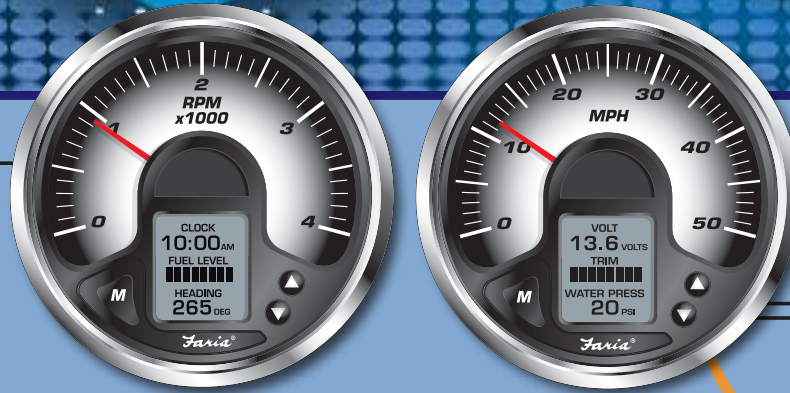


MG2000™

from Faria Marine Instruments

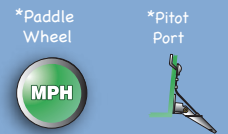


- Available:
- Pressure Ports for Pitot Speed and water pressure
 - Paddle Wheel Speed
 - NEMA0183 GPS Interface



Suzuki K Line
Communication Protocol

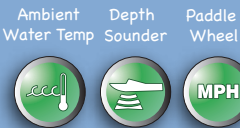
4" or 5" gauges available



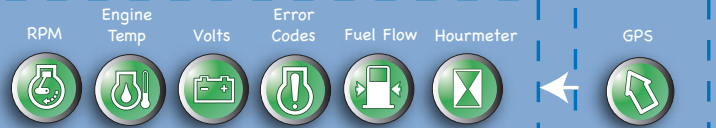
Connect to Faria Bus for more display options. (See Below)



Available if using with a Faria Transducer



Information from engine ECU



MG2000 Tachometer

- RPM
- Water Pressure
- Oil Temperature
- Engine Hours Run Only
- System Voltage
- Trim
- Depth Sounder (with Faria Transducer)
- Fuel Management system
 - Fuel Consumption Rate
 - Fuel Remaining
 - Estimated range to empty
 - Fuel used since last reset.
 - Average GPH
- System generated engine diagnostic messages.

MG2000 Speedometer:

- Paddle Wheel Speed*
- Pitot Tube Speed*
- Current fuel level (Digital)
- Barometer (from engine ECU via Faria Bus)
- Trip Log
- Air and Water Temperatures
- GPS information (External GPS required via NMEA 0183 bus.)
 - Speed over ground
 - Clock
 - Latitude
 - Longitude,
 - Heading

*Available if not using Faria Transducer.

Engine Warnings for Over Temp., Low Water Pressure, Low Battery Voltage, Water in fuel, High Boost Pressure, Throttle Position Sensor.

If available the MG2000 can also warn the operator about Low Fuel, Low Depth, High Depth.

Also available:



All Faria Marine Instruments comes with a Limited Lifetime Warranty see www.faria-instruments.com for details.

