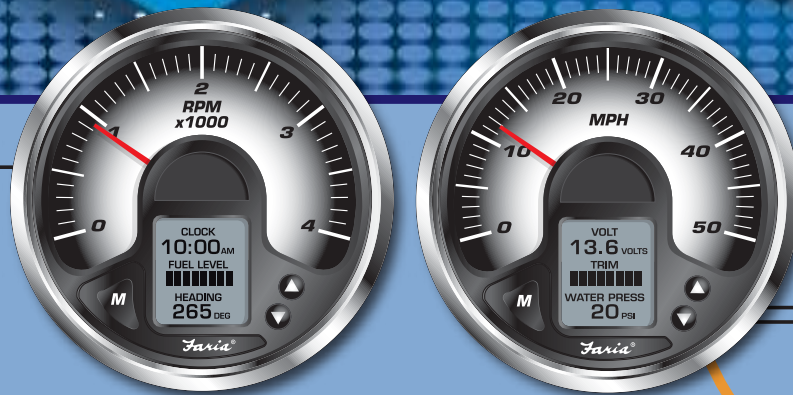
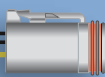


MG2000™

from Faria Marine Instruments



- Available:
- Pressure Ports for Pitot Speed and water pressure
 - Paddle Wheel Speed
 - NEMA0183 GPS Interface



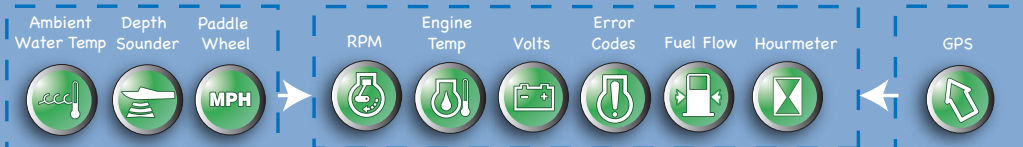
K Line
Communication Protocol

4" or 5" gauges available

HONDA
MARINE



Connect to Faria Bus for more display options. (See Below)



MG2000 Tachometer

- RPM
- Water Pressure
- Oil Temperature
- Engine Hours Run Only
- System Voltage
- Trim
- Depth Sounder (with Faria Transducer)
- Fuel Management system
 - Fuel Consumption Rate
 - Fuel Remaining
 - Estimated range to empty
 - Fuel used since last reset.
 - Average GPH
- System generated engine diagnostic messages.

MG2000 Speedometer:

- Paddle Wheel Speed*
- Pitot Tube Speed*
- Current fuel level (Digital)
- Barometer (from engine ECU via Faria Bus)
- Trip Log
- Air and Water Temperatures
- GPS information (External GPS required via NMEA 0183 bus.)
 - Speed over ground
 - Clock
 - Latitude
 - Longitude,
 - Heading

*Available if not using Faria Transducer.

All engine warnings are supported.

If available the MG2000 can also warn the operator about Low Fuel, Low Depth, High Depth.

Also available:



All Faria Marine Instruments comes with a Limited Lifetime Warranty see www.faria-instruments.com for details.

